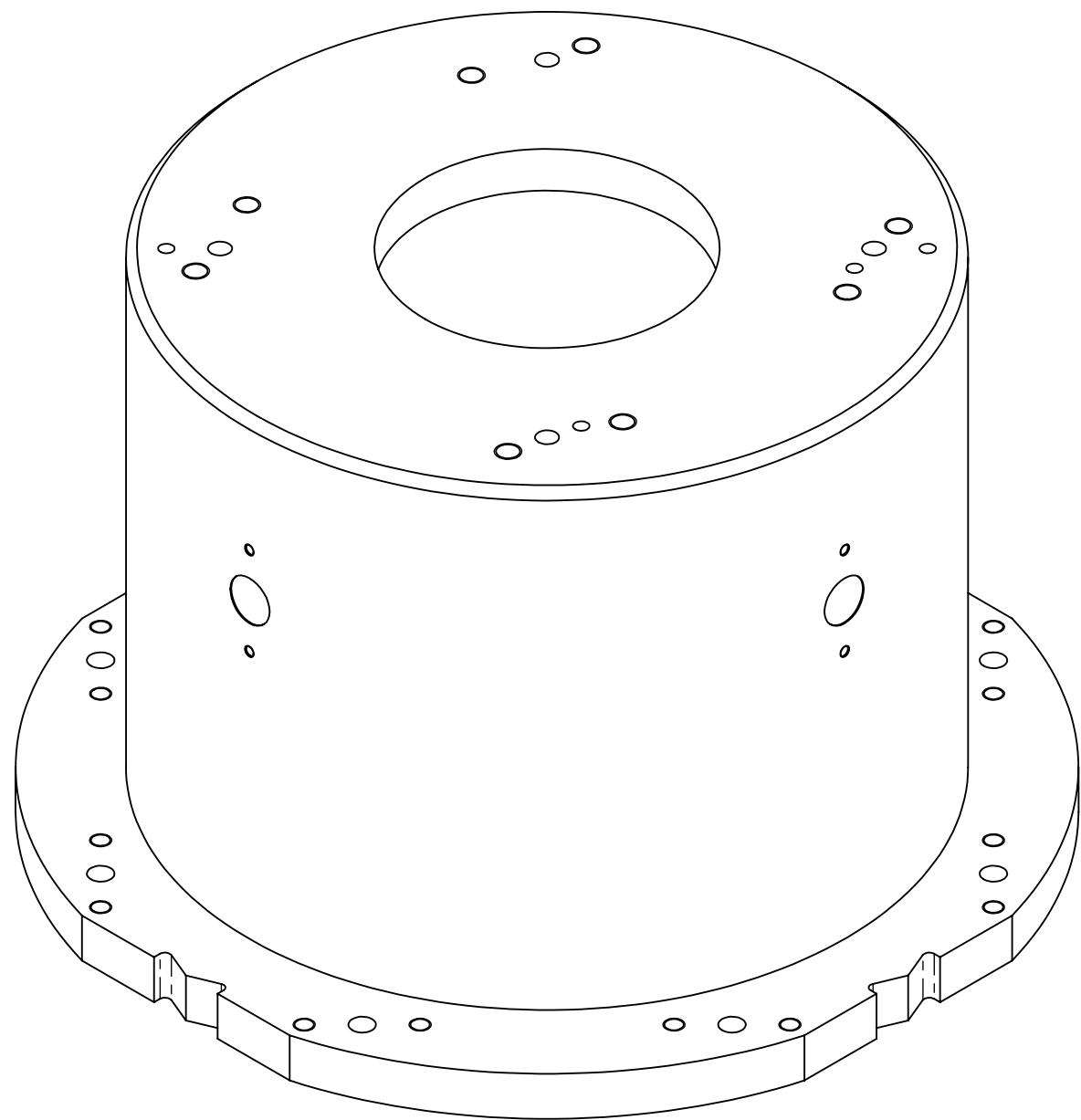
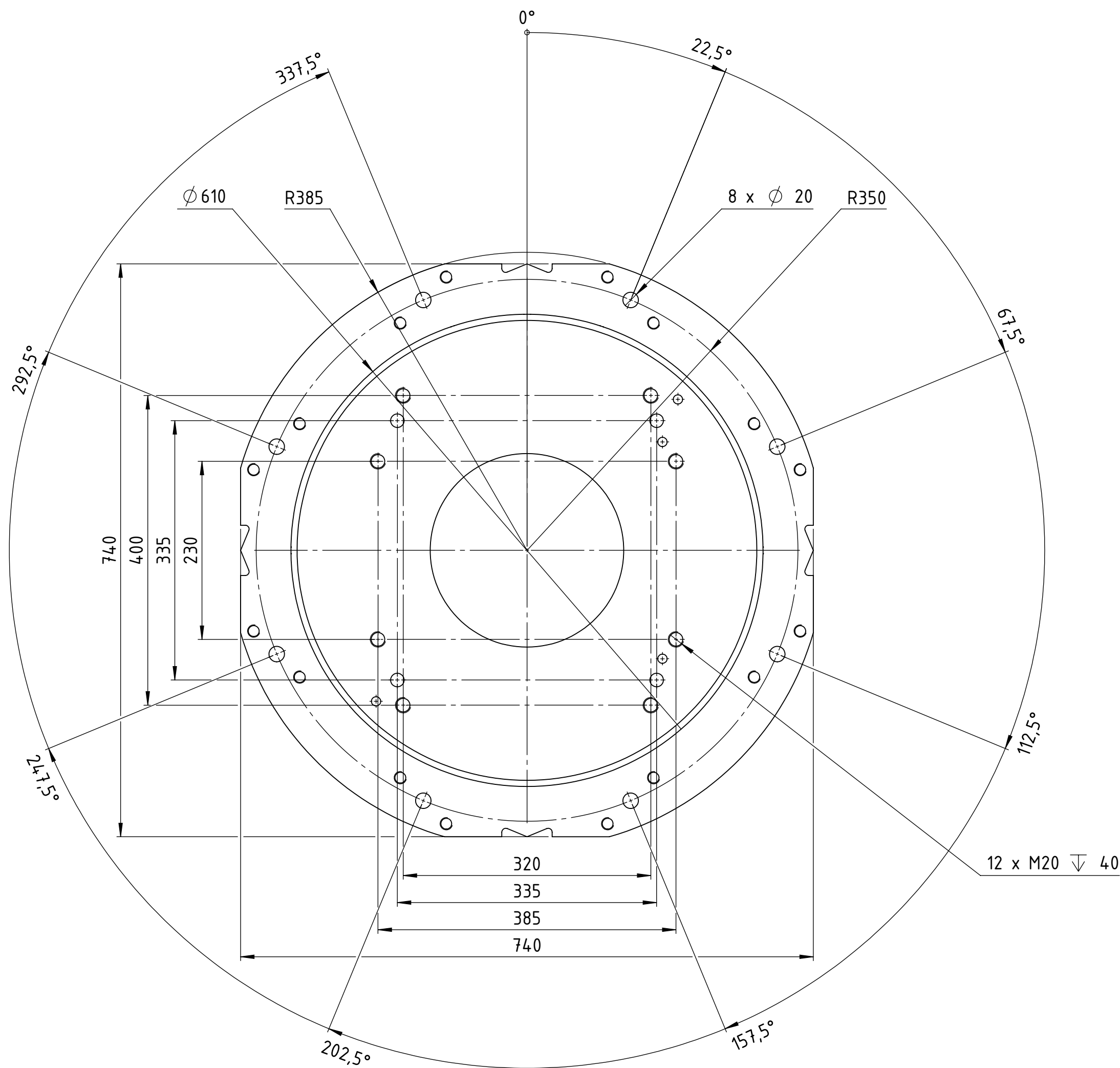
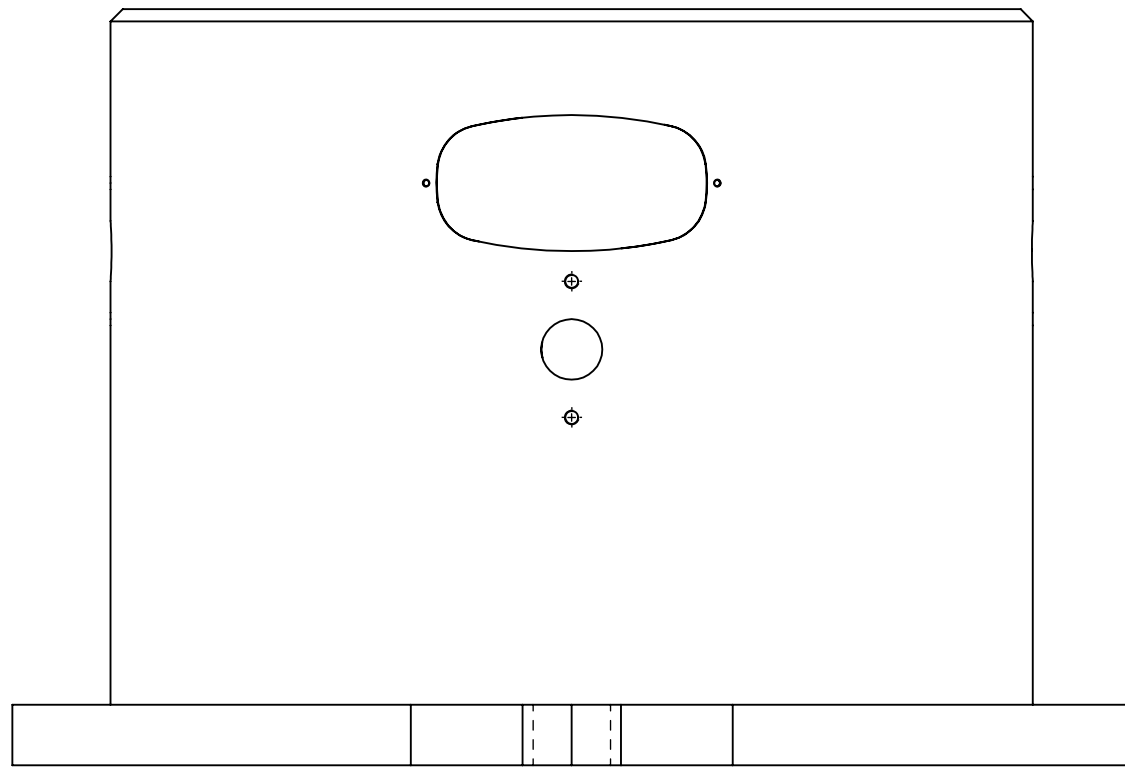
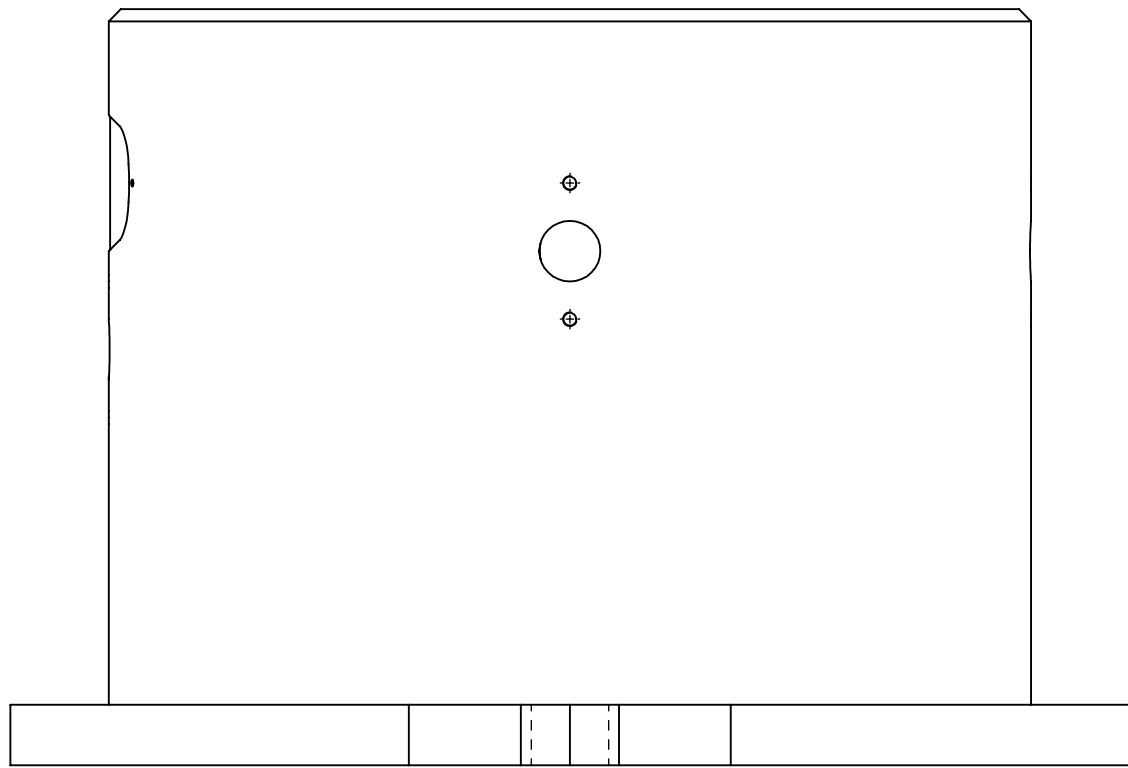
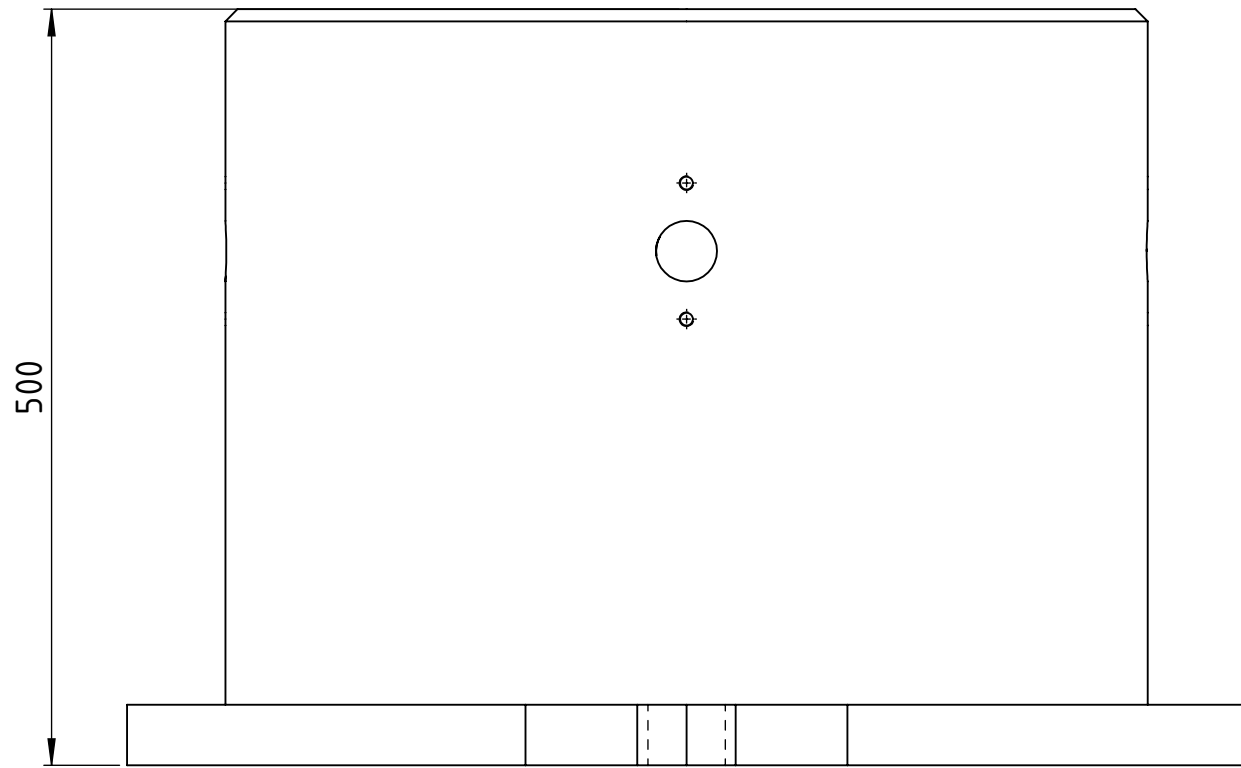
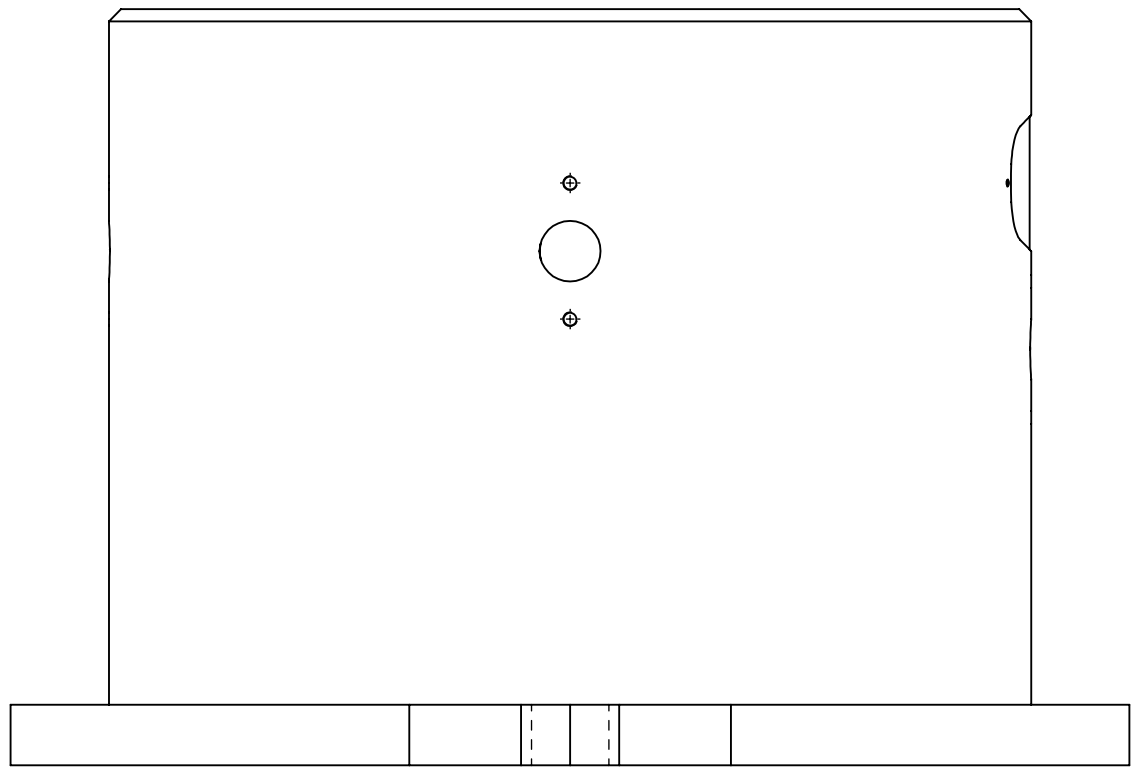


The reproduction, distribution and utilization of this document as well as the communication of its content to third parties without the written permission of Yaskawa Europe B.V. is prohibited. The payment of damages. All rights reserved in the event of a patent, utility model or design.



rev	revision text	rev.date	rev.by	appr. date	appr. by
01	general simplification	2023-02-03	Kaelland	2023-02-06	Michaels
02	Increased wall thickness	2025-07-19	Michaels	2025-07-19	Michaels
03	Center mark and drillings changed	2025-07-15	Seidhuber	2025-07-15	Michaels

where nothing else is indicated tolerances: DIN ISO 2768-mH welding: DIN EN ISO 15920-A no sharp edges	status: Released		dimension: 740x740x500 mm		weight: 155,885 kg
	SAP EMEA no: 230753		www.yaskawa.eu.com		
	title / description: robot stand M-500		created: 2023-07-19	drawn: 2023-07-19	sheet: A1
	drawing-no: 0001060768-100		approved: 2023-07-19	revision: 04	15 4/5